

# Project Analytics

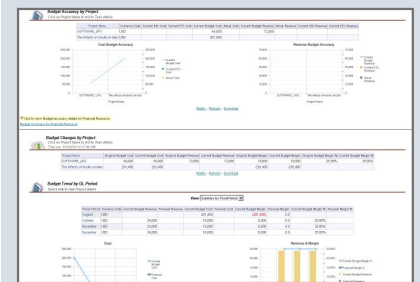
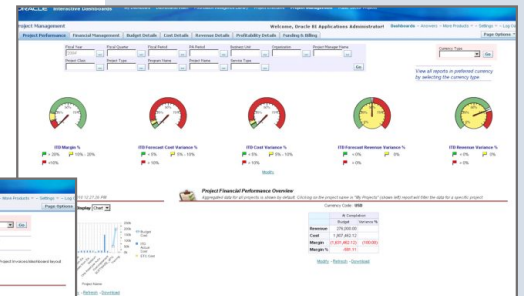
## EXPRESS

### What is Project Analytics Express?

eVerge Group's Project Analytics Express is a rapid implementation solution that enables you to deploy Project Analytics quickly and economically.

Components of the solution include:

- **Fixed Fee**
- **Readiness Checklist**
- **Proven Methodology**
- **Standard Project Plan**
- **Knowledge Transfer**
- **Project Data Lineage**
- **Pre-built Content:**
  - Data Model
  - Meta Data
  - ETL Adaptors
  - Dashboards and Reports



Effective project lifecycle tracking requires complete and timely information. eVerge Group has developed a project lifecycle analysis and tracking solution using Oracle Project Analytics. Oracle Project Analytics is a complete analytics solution that delivers insight into project-based data, so all team members can seamlessly track the lifecycle of a project with complete and timely information. Oracle Project Analytics provides out-of-the-box robust dashboards that show past, present and future project performance, enabling you to:

- **Control your project costs** – Improve your cost management and project profitability with enhanced visibility into project costs and variances.
- **Improve your project performance** – Track and manage items such as non-credit card invoices paid on time and interest penalties payments. With Project Analytics you can minimize delinquent debt amounts to improve management accountability and reduce Treasury borrowing.
- **Maximize cash flow** – Reduce paperwork and improve payment performance management through the use of electronic payment monitoring.

**eVerge Group's Project Analytics solution helps you answer questions like:**

- What are my most profitable projects?
- Who are my most profitable customers?
- Where am I spending the most?
- What is my cost variance?
- What tasks or resources are driving the cost variances?
- How do I optimize resource allocation and cash flow?
- What is the estimated cost at completion of all projects in my region?
- If these questions often arise in your business, call us to see if eVerge's Project Analytics Solution is right for your business needs

### Benefits of eVerge Group's Project Analytics Rapid Implementation

#### Benefits to the Business User

- Role-based project insight across the lifecycle of the project and across the organization
- Single source of truth by leveraging Oracle's common enterprise information model for business intelligence
- Hundreds of standards-based, out-of-the-box KPIs, dashboards, and reports
- Rapid implementation speeds time to ROI

#### Benefits to the IT Manager

- Reduction of demands on IT resources by including pre-built ETL adapters, a pre-built data model, pre-built metadata, as well as pre-built dashboards and reports
- Integration of data from multiple sources to provide business users with a complete view of project lifecycle and business operations
- Reduced burden on IT resources by providing comprehensive self-service capabilities to end user
- Knowledge transfer resulting from client participation in the implementation
- Leveraging eVerge Group's 6+ years of deploying OBI EE solutions
- eVerge Group's insight of the source reporting systems gained as a long-time PeopleSoft implementation partner.



4965 Preston Park Blvd.  
Suite 700  
Plano, TX 75093  
972-608-1803  
888-548-1973 (Toll Free)  
www.eVergeGroup.com

